

The Cisco Webex Desk Pro Video Device Secure Case is a heavy-duty metal enclosure designed to protect the Cisco Webex Desk Pro from damage. The case will safeguard the video conferencing device in demanding environments such as prisons, jails, juvenile detention facilities, and medical confinement facilities.

It is available with a heavy-duty handset and 32-inch armored cable or as a handsfree device using the speaker and microphones of the Webex Desk Pro. The Lexan panel can be field replaced if damaged. The screws holding the stainless steel front panel are security Torx type

## Initiating a call

Calls can be originated when lifting the handset by programming the Webex Video Device to dial a specific phone number when the handset is lifted. Calls can also be initiated by using the Proximity function from either a Webex Desk application or Proximity app on a smart phone/pad device. This enables you to outbound dial a call on the Cisco Webex Video Device without needing to touch the screen which is being protected by a Lexan panel.

## Answering a call

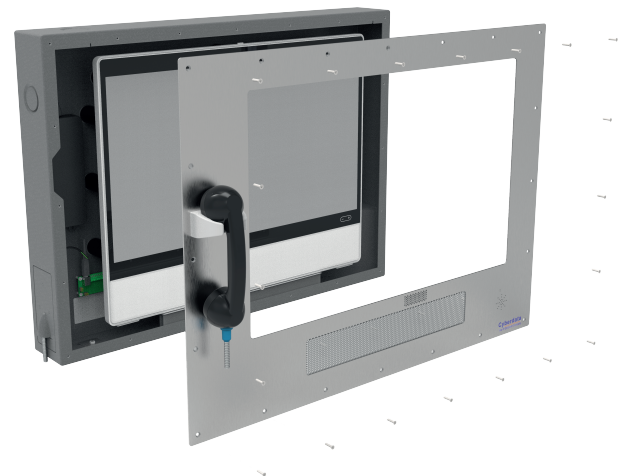
Calls can be answered by several different methods:

- Auto answer - through the Webex Video Device's web interface it can be programmed to auto answer any inbound call.
  - Handsfree Mode: the user converses using the internal microphone and speaker of the Webex Video Device.
  - Handset Mode: the Webex Video Device is configured to automatically answer an incoming call where the audio will only play through the handset.
- Manual answer - the Webex Video Device will ring until the user physically picks up the handset to answer the call, and all audio is played through the handset of the case.

## Hanging up a call

Calls are terminated depending on the mode selected:

- Handsfree or Auto-Answer Mode - the call can only be ended when the 'far-side' participant has hung up. The call cannot be ended by the CyberData Video Device Secure Case, however the call can be terminated using the Proximity function of the Webex Desk PC application or the Cisco Proximity mobile application.
- Handset Mode - the call ends when the handset is hung up on the phone cradle hook switch of the Webex Video Device Secure Case.



## Notes

- The screen is protected with a sheet of Lexan plastic so the touch function is not available.
- Volume control is available by accessing the Webex Video Device's web interface remotely.
- The Webex Video Device can not be shipped inside the case; it must be installed at the site of operation.
- The power switch is accessible with a special tool, the Power Switch Access Pin, which is included.

\_\_\_\_\_

## Features

- Powder-coated front cover and back box
- Lexan cover for Webex Video Device display; replacement panels available
- Handset with 32" armored cable
- USB Hookswitch controller

Weight

- 54 lbs. [24.49 kg]

## Dimensions

- Length: 31.496 inches [800 mm]
- Width: 4.016 inches [102 mm] - not including handset
- Height: 17.262 inches [438mm]

Note: Dimensions are measured from the perspective of the product being upright with the front of the product facing you.

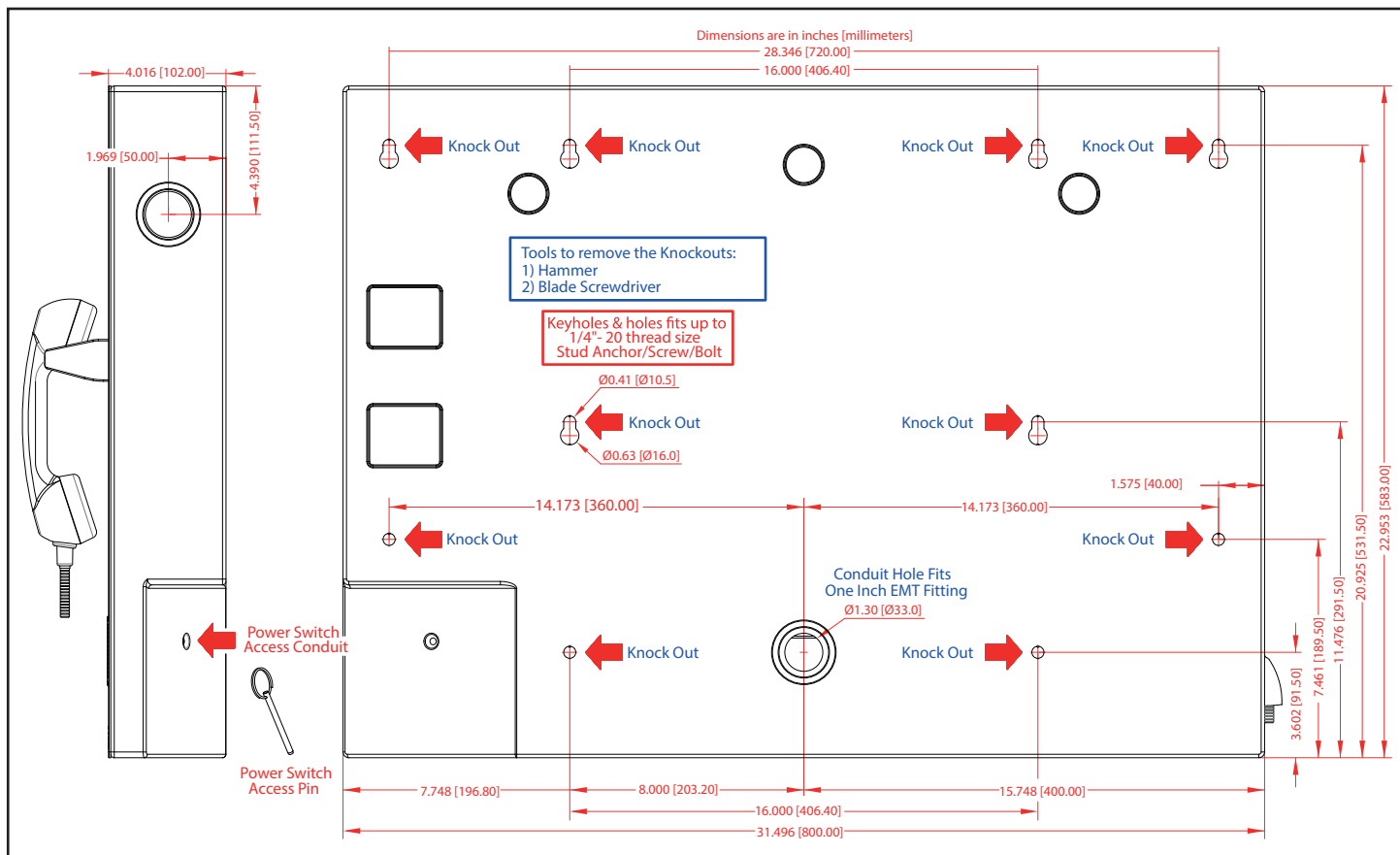
## Compliance

- TAA and RoHS compliant

## Part Numbers

- 011547 Cisco Webex Desk Pro Video Device Secure Case Handset
- 011552 Cisco Webex Desk Pro Video Device Secure Case Handsfree - Alternate Option Available

### Dimensions and Features - Rear View



# Cisco Webex Desk Pro Video Device Secure Case

## Dimensions and Features - Front View

