



OnCast Desktop

Minimum Requirements

August 24, 2005

LiteScape Technologies, Inc.
1000 Bridge Parkway, Suite 200
Redwood Shores, CA 94065
650-227-0220
650-227-0226 FAX
info@litescape.com
www.litescape.com

Copyright © 2005 LiteScape Technologies, Inc. All rights reserved.

Information in this document is subject to change without notice. No part of this publication may be reproduced for any purpose other than the purchaser's personal use, without written permission of LiteScape Technologies, Inc.

About LiteScape Technologies

LiteScape Technologies, Inc. markets enterprise software that enhances the value of IP Telephony by integrating business applications with VoIP and wireless devices. By communications-enabling telephones with interactive voice, text and image capabilities, LiteScape solutions improve business processes, employee productivity and the customer experience. The company's products include OnCast™, which enables users to perform real time, interactive communications from their desktop to IP telephones, and LS ServicePoint™, customer and employee self-service solutions for the converged enterprise. LiteScape is a certified ISV and markets its products globally through value-added distributors and resellers. Headquartered in Redwood Shores, Calif., LiteScape is a privately held corporation and is funded by top tier investors.

Trademarks

LiteScape, KIDS (Knowledge Information Delivery System), Multi-modal Application Platform (MAP), CallTrack, CallTrack PRO, Secure Remote Access (SRA) and OnCast are registered trademarks of LiteScape Technologies, Inc. in the U.S.A. and other countries. Microsoft and Windows are registered trademarks of Microsoft Corporation. All other trademarks and trade names referred to in this document are the property of other companies.

Document History

Revised: 08/2005.

LiteScape OnCast Desktop, Outlook Plug-In Hardware and Software Requirements

LiteScape OnCast Desktop, Outlook Plug-In is a powerful collaboration tool for Outlook users, which enables real-time text, image, and audio communication between PC users using Outlook and Cisco IP phones.

Hardware Requirements

Minimum Requirements

Any PC that runs Windows XP/Outlook 2003 is capable of running OnCast PC (Outlook Plug-In) Client.

There is no need to install any software on the Server to run OnCast PC (Outlook Plug-In).

Recommended Hardware

- Processor Speed: Pentium 4, 1+ GHz
- Memory: 512 MB RAM
- Hard Disk: 10 GB
- Microphone and Speaker

Software Requirements

The following software and versions are required to install the LiteScape. Also, please read the installation requirements for supported installations.

Client

- Microsoft Windows XP/Windows 2000
- Microsoft Outlook 2003/2002/2000
- Sun MicroSystem's JMF. (2.1.1E)
- Microsoft .NET Framework (1.1 WITH sp1)
- Java JRE (1.4.X)

NOTE: OnCast Desktop installer detects the above freeware components on the computer and installs them if needed.

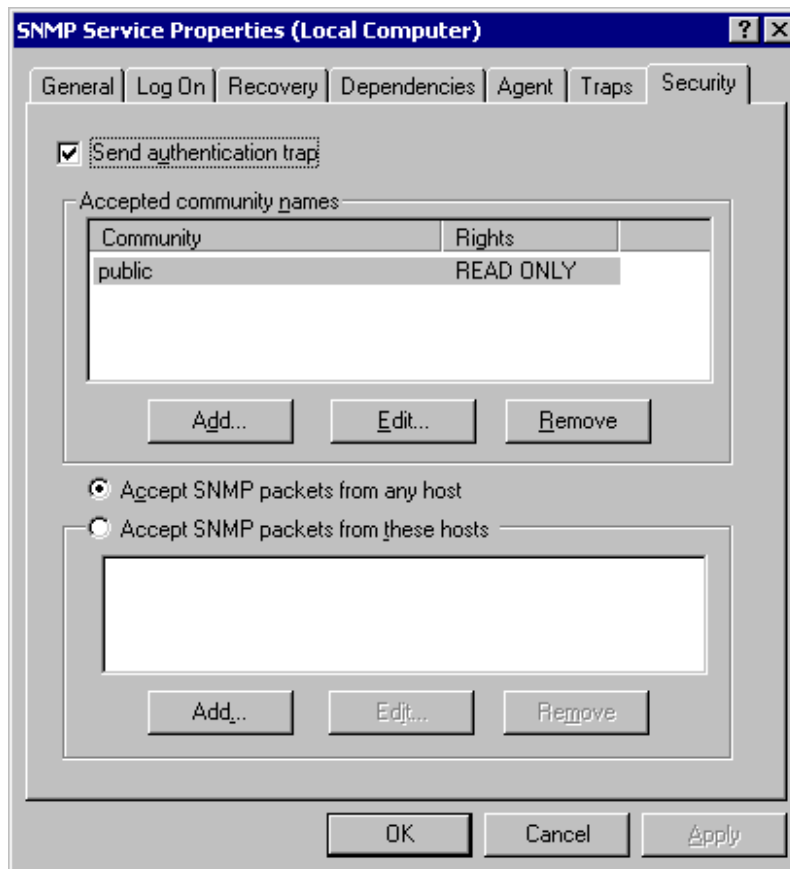
Servers

- Cisco Call Manager 3.2 or newer version
- MS Exchange Server

Servers Pre Configuration

- CallManager
 - Note down the IP address of the Cisco CallManager. In case a publisher / subscriber model is used, use the subscriber's IP address. Otherwise, use the publisher's IP address.

- OnCast Desktop needs a user account that has the ability to push content to all IP phones. HOW TO: Go to the **CallManager > System > Enterprise parameters > URL Authentication**.
 - If the authentication URL is pointing to a third party server, you must create / locate a user on the third party authentication server that has the ability to push content to all IP phones.
 - If the authentication URL is pointing to the CallManager, a user must be created with all devices associated with it. HOW TO: Go to the **CallManager > Users > Add a new user**. Once the user is created, perform a search without setting any of the criteria. All devices will show up in the search result. Select "Check All in Search" and deselect "No Primary Extension". Click **Update**.
- The Cisco Call SNMP service should be activated on the CallManager. HOW TO: On the CallManager Server Go to **Start > Control Panel > Administrative tools > Services**. Confirm that the **SNMP service** is started.
- Note down the SNMP community name. HOW TO: Go to **Start > Control Panel > Administrative Tools > Services**. Right click on **SNMP Services** and choose **Properties**. Under **Security** tab, you should see the SNMP community name (default is public). Please ensure the Community rights are READ ONLY.



- Microsoft Active Directory Server.
 - Correct IP phone extensions should be populated in the Active directory.
HOW TO: First check to see if the phone extensions appearing next to the users in the global address list are the same as DN's (Directory Numbers) in the CallManager. NOTE: Global address list's phone extensions can be set in Active Directory under the user **Properties > General** tab, in the **Telephone number** field.

The screenshot shows the 'Test User Properties' dialog box with the 'General' tab selected. The 'Telephone number' field is circled in red and contains the value '12345'. Other fields include First name (Test), Last name (User), Display name (Test.User), E-mail (tuser@litescape.com), and Web page. The dialog box has a title bar with a question mark and a close button. The tabs at the top are: Member Of, Dial-in, Environment, Sessions, Remote control, Terminal Services Profile, CDM+, Exchange General, E-mail Addresses, Exchange Features, Exchange Advanced, General, Address, Account, Profile, Telephones, and Organization.